

DIMENSIONS (IN)			MEDIA DEPTH (MM)	EFFICIENCY & PRESSURE DROP		
A	B	C		99.99% vs. 0.3µm	99.995% vs. mpps	99.9995% vs. mpps
MIN 6.00	MIN 6.00	3.00	53	0.45"	0.58"	0.65"
		3.54	70	0.34"	0.44"	0.49"
MAX 48.00	MAX 72.00	4.83	100	0.29"	0.36"	0.36"

FRAME TYPE	Rated Air volume at 100 ft./min.			
	DIM "A"	Dim "B"	CFM	CFM (W/CB)
GASKET	23.62	23.62	340	319
	23.62	47.62	708	688
REVERSE GEL	21.12	21.12	240	223
	21.12	45.12	551	533
FRONT GEL (53mm)	20.75	20.75	268	250
	20.75	44.75	595	577
FRONT GEL (70mm)	20.75	20.75	262	244
	20.75	44.75	586	568
FRONT GEL (100mm)	20.75	20.75	253	236
	20.75	44.75	572	554
KNIFE EDGE	23.62	23.62	352	331
	26.62	47.62	824	801

- MATERIAL:**
1. FILTER MEDIA: MICRO-GLASS FIBER / ACRYLIC RESIN BINDER
 2. FRAME: EXTRUDED 6063-T5 ANODIZED ALUMINUM
 3. SEALANT: FIRE RETARDANT/PHOSPHORUS FREE TWO PART POLYURETHANE

- GASKET OPTIONS:**
4. SEAMLESS URETHANE FOAM, POUR IN PLACE
 5. NEOPRENE FOAM, PSA BACKER
 6. URETHANE FOAM, PSA BACKER
 7. CONTACT FACTORY FOR ADDITIONAL AVAILABLE MATERIALS.

- GEL OPTIONS:**
8. NON-FLOWING SILICONE OR URETHANE

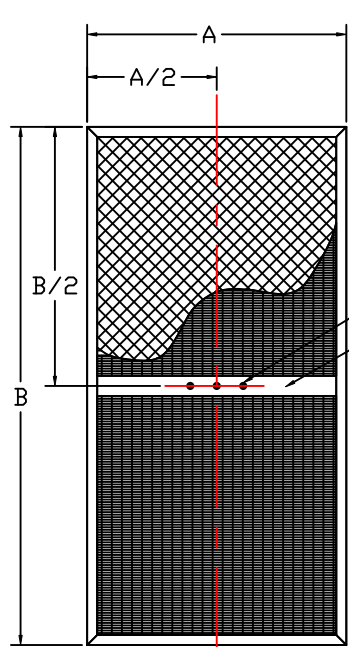
- SCREENS OPTIONS:**
9. WHITE EXPANDED POWDER COATED STEEL
 10. EXPANDED STAINLESS STEEL
 11. PERFORATED ALUMINUM
 12. PERFORATED STAINLESS
 13. CONTACT FACTORY FOR ADDITIONAL AVAILABLE MATERIALS.

- CENTERBOARD OPTION:**
14. AVAILABLE WITH 1/2/3 PORTS FACTORY SUPPLIED PLUG ASSEMBLY INSTALLED TO SEAL PORTS (AIRTIGHT).

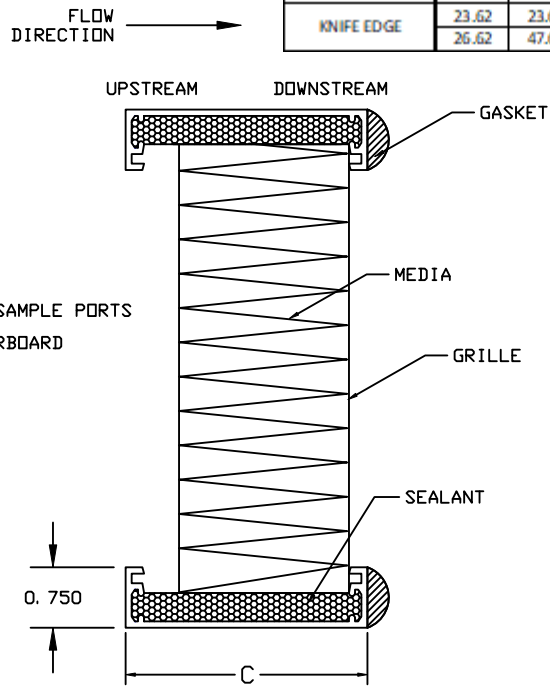
- PERFORMANCE NOTES:**
15. FILTER EFFICIENCY AND INITIAL PRESSURE DROP RATED AT 100 FT/MIN.
 16. FILTER CLASSIFICATIONS PER IEST-RP-CC001.

- SIZING NOTES:**
17. FILTER DIMENSIONS TO BE IN 1/16" INCREMENTS IN RANGES SHOWN ON TABLE.
 18. CENTERBOARDS RECOMMENDED FOR FILTERS WITH "A" DIMENSION GREATER THAN 30" AND "B" DIMENSION GREATER THAN 36".
 19. IF "A" IS LESS THAN OR EQUAL TO 36", MAXIMUM "B" DIMENSION UP TO 72".
 20. IF "A" DIMENSION EXCEEDS 36", MAXIMUM "B" DIMENSION IS 48".

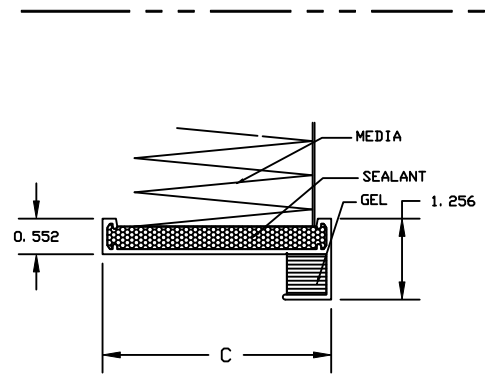
SEE SIZING NOTES FOR RESTRICTIONS AND DETAILS



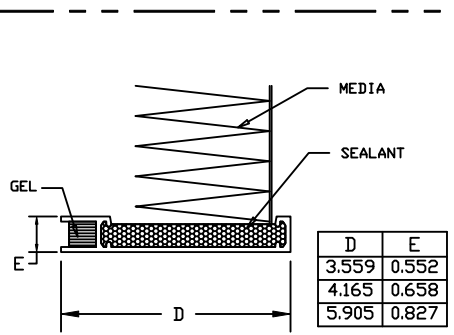
DOWNSTREAM VIEW (SHOWN W/OPTIONAL CENTERBOARD)



GASKET FRAME SECTION VIEW

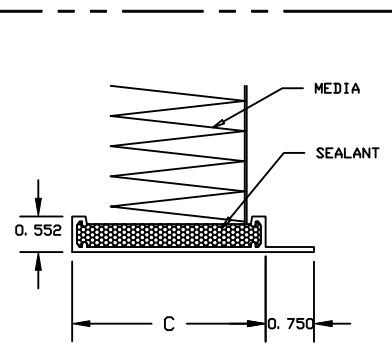


REVERSE GEL FRAME SECTION



FRONT LOAD GEL FRAME SECTION

D	E
3.559	0.552
4.165	0.658
5.905	0.827



KNIFE EDGE FRAME SECTION

camfil
 ©Camfil USA Inc. <http://www.camfil.com>

DESCRIPTION
 CUSTOM MEGALAM PANEL
 MICRO-GLASS MEDIA

SHEET 1 of 1	DRAWING NUMBER 511092	REV. -
APPROVED BY: 10/6/2021	DATE: DM	DRAWN BY: SM
		DATE: 11/5/2021